




Deliver Critical Intelligence Instantly

Real-Time Crime Centers (RTCCs) and fusion centers gather intelligence from countless sources. But getting that intelligence to officers in the field quickly enough to influence decisions during an incident has traditionally required manual distribution, creating critical delays.

Genasys Evertel with Peregrine removes that delay by automatically delivering critical intelligence analysis to the right personnel, regions, and devices.

Why Genasys Evertel and Peregrine?

-  Evertel keeps law enforcement teams, departments, and agencies, connected across jurisdictions with secure, compliant operational messaging.
-  Peregrine helps analysts quickly interpret intelligence and identify emerging threats by aggregating data from multiple sources into a unified operational dashboard.
-  Personnel automatically receive critical intelligence updates in seconds as incidents unfold with Evertel and Peregrine.



Core Benefits

Demonstrate the impact of your RTCC

- Ensure intelligence produced by analysts directly supports field operations
- Strengthen justification for technology investments and public safety funding

Close more cases

- Faster suspect identification and apprehension
- Accelerate investigative timelines and case resolution

Improve officer safety






- Identify suspects, vehicles, and threats earlier
- Improve situational awareness during rapidly evolving incidents

Strengthen multi-agency coordination

- Support multi-jurisdictional and statewide information sharing
- Maintain real-time situational awareness across regions

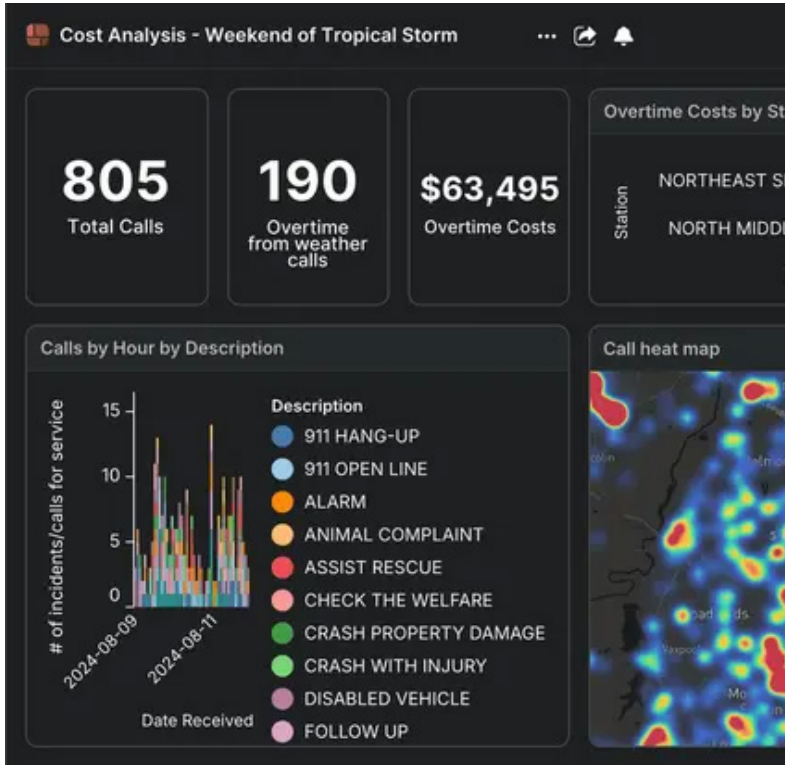


Built for Modern Law Enforcement Operations

-  **Real-Time Crime Centers**
-  **Fusion Centers**
-  **Statewide Public Safety Networks**
-  **Multi-Agency Coordination (MAC) Groups & EOCs**
-  **Regional Law Enforcement Partnerships**
-  **Emergency Management Coordination Centers**

The Peregrine integration helps agencies transform intelligence dashboards into **immediate operational communication**, ensuring the latest updates reach personnel when they matter most.

Schedule a demo or conversation with us to find out how Peregrine and Evertel work together to help you close cases and keep communities safe.



About Peregrine

Peregrine Technologies is a public safety data integration and analytics platform used by state and local government agencies, particularly law enforcement and emergency management organizations.

Peregrine unifies large volumes of disconnected, unstructured data into a single secure environment, enabling users to search, analyze, visualize, and collaborate on real-time information to support investigations, operations, and strategic decision-making. Peregrine focuses on helping public sector agencies make faster, more informed decisions through data-driven insights.

Learn more at <https://peregrine.io>

About Evertel

Genasys Evertel is a secure, real-time collaboration and communications platform designed for modern law enforcement. Evertel gives organizations speed to collaborate instantly, precision in how information is shared, and clarity that aligns decision-makers.

With secure messaging, document sharing, and cross-agency coordination tools, Evertel keeps teams unified, informed, and ready to act. Evertel meets CJIS, FOIA and HIPAA record retention requirements so agencies and personnel can communicate in confidence.

Learn more at genasys.com/Evertel

