

CASE STUDY FOR

TABLET COMMAND WEBINAR SOUTHERN MARIN COUNTY

COMMUNICATIONS GAME CHANGER

During Fire Evacuations in Southern Marin County, CA

Situation

Fire, first responders, and emergency managers throughout California are acutely aware of the growing threat of wildfires within their communities. The scope and impact of wildfire events continues to expand and with it the interdepartmental cooperation required to keep citizens safe.

Giving very explicit directions and ensuring that commands are followed becomes of paramount importance during a wildfire or other emergency event. Commanding officers who are responsible for incident management and emergency scene accountability focus on ground level resources being pushed into an area while managing ground resource communications in a chaotic atmosphere.



Problem

Most events are no longer local only — they require a full array of resources from outside of the host county. In the past, local responders, as well as mutual aid responders, haven't had the necessary information and situational awareness that allows them to fully engage, e.g., the current state of the emergency, what areas have been evacuated, who else is on scene, status of events, road closures, and ongoing evacuation warnings and information.

Often, critical information is disseminated over time and recorded manually causing delays that may add to the event severity. And when mutual aid support arrives, battalion chiefs and captains haven't had the opportunity to familiarize themselves with the local geography and layout of neighboring counties, further complicating communications and response time.

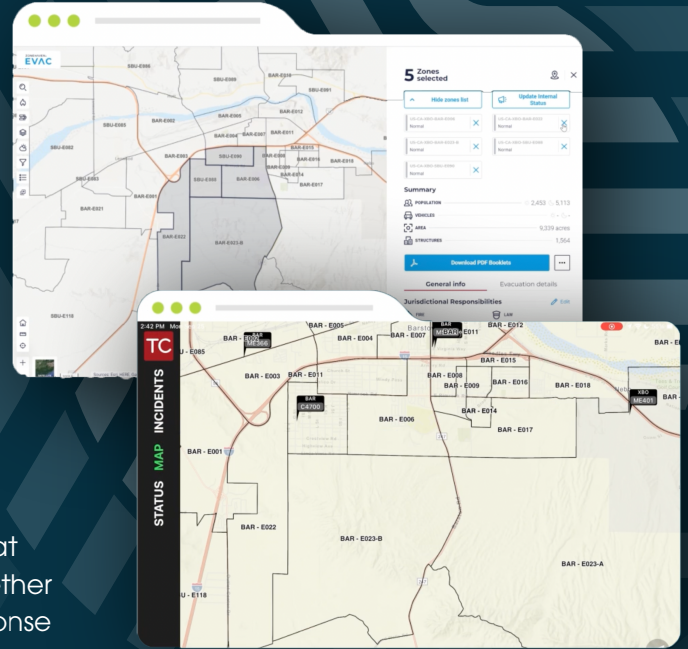
Solution

The collaboration between **Genasys Protect EVAC and Tablet Command signifies** a major breakthrough for agencies utilizing Tablet Command, a widely-used, mobile, emergency response management tool used by **30,000+ fire service experts in the U.S. and eastern Canada**. Through Tablet Command, that often serves as a complete Mobile Data Terminal (MDT) – the device used inside a fire engine to locate other units and get access to key information, responders will now have immediate access to evacuation zones through Genasys Protect EVAC.



This fusion offers first responders zone-focused information and perspectives, bolstering cross-agency awareness and communication in fire emergencies. No longer needing to take manual notes, fire and emergency responders have state-wide information and situational awareness available in seconds and easily digestible for better critical operations decisions.

According to Charlie Crocker, Senior Vice President of SaaS at Genasys, "Our partnership with Tablet Command brings together two best-of-breed technologies to improve emergency response management that ultimately saves lives." And no other communications solution has the native integration that Genasys Protect does with Tablet Command, WAZE, IPAWS, and ESRI.



Results

For commanding officers ordering evacuation, it closes the loop with the field units whether or not the warnings have gone out. This reduces radio traffic in rapidly expanding complex incidents.

Matt Barnes, Deputy Fire Chief, Southern Marin Fire Protection District, said - "As a branch director, I have used Genasys Protect evacuation zones outside of Marin County. It sped up the process of having access to the zones. I was able to communicate more efficiently and effectively about the areas that needed to be evacuated. This is a game changer in communicating evacuation areas."

This integration provides fire rescue teams with **real-time** access to precise, reliable location information, enhancing their understanding of the situation. Responders can now acquaint themselves with evacuation areas beyond their normal area of operation prior to arrival. When they reach the location, they will already know if the area is under an advisory warning or if an evacuation order has been issued. This extra layer of information is crucial in urgent situations like wildfires, where every second counts.

**REQUEST A
DEMO**

