

## CASE STUDY FOR **BOULDER COUNTY**

### ***Boulder County Strengthens Evacuation Response***

#### **Situation**

Located at the foot of the Rocky Mountains, Boulder County and the City of Boulder, offer breathtaking landscapes, yet their geographic position also heightens their vulnerability to natural catastrophes.

The city's geographical setup at the entrance of several canyons presents an ongoing threat of flooding, while wildfires, as evidenced by the devastating Marshall Fire in December 2021 and the National Center for Atmospheric Research (NCAR) fire three months later, pose a significant risk to the county and its residents.



#### **Problem**

The Colorado Front Range's susceptibility to drought results in arid, sparsely vegetated terrains, which exacerbate the flood hazards. Additionally, Boulder County's tendency to experience abrupt, intense storms heightens the potential for flash floods and lightning-induced wildfires. The high potential for floods and wildfires highlights the link between Boulder's natural surroundings, climate change effects, and the interconnected nature of major risks.

Whether flood, fire, or some other emergency event, implementing an organized and efficient mass evacuation is complicated by the existence of few main arteries in and out of the City of Boulder and the surrounding area. With a population of over 300K, evacuating citizens can be particularly challenging.

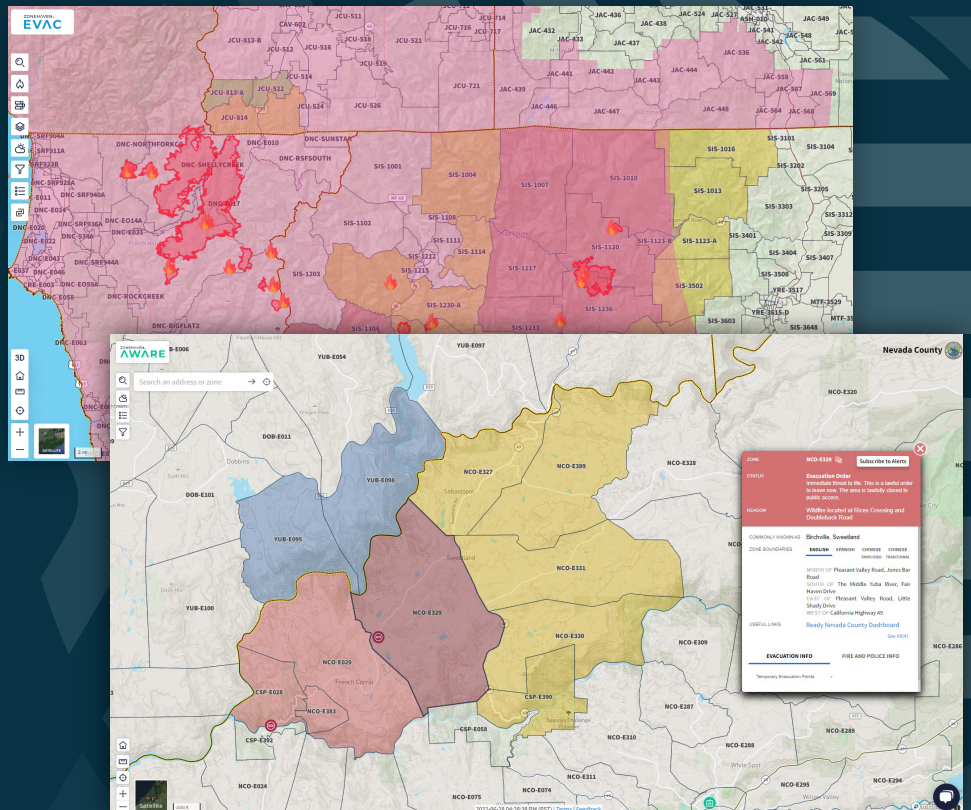
#### **Solution**

Genasys Protect's suite of software and hardware solutions, which powers over 16% of Colorado's public safety alerts, including 10 counties and two cities, was chosen to modernize Boulder County's emergency response management and critical communications systems.

Genasys Protect offers solutions for emergency preparation and response, built on a versatile data platform capable of gathering and refining essential information. This suite of solutions enables the implementation of emergency response strategies and actions informed by a comprehensive and integrated overview.

In particular, Genasys Protect EVAC, improves public comprehension of evacuation directives through a public access zone-based map that includes enriched communication capabilities and information on road closures, evacuation sites, and human and animal shelters. EVAC also delivers crucial support for operational decision-making to emergency responders by providing in-depth information on essential evacuation locations, fire analysis, and escape paths.





## Results

The integration of Genasys Protect **significantly enhanced** Boulder County’s effective warning systems and community readiness initiatives, and created a platform for operational planning, training, and decision-making support in emergency situations and beyond. Speaking about EVAC, Paul Neyman, VP of Sales, Genasys Inc., stated, “Our tech-forward approach enables firefighters to evacuate areas by highlighting zones on a preloaded map, providing seamless coordination among jurisdictions and real-time updates to the public for effective emergency response.”

With projected increases in wildland fire and flooding risks expected to rise in the future by **nearly 50% from 2024 to 2050**, Boulder County and the City of Boulder have positioned their first responder and emergency management teams to be ready when the next event strikes.

REQUEST A  
DEMO

