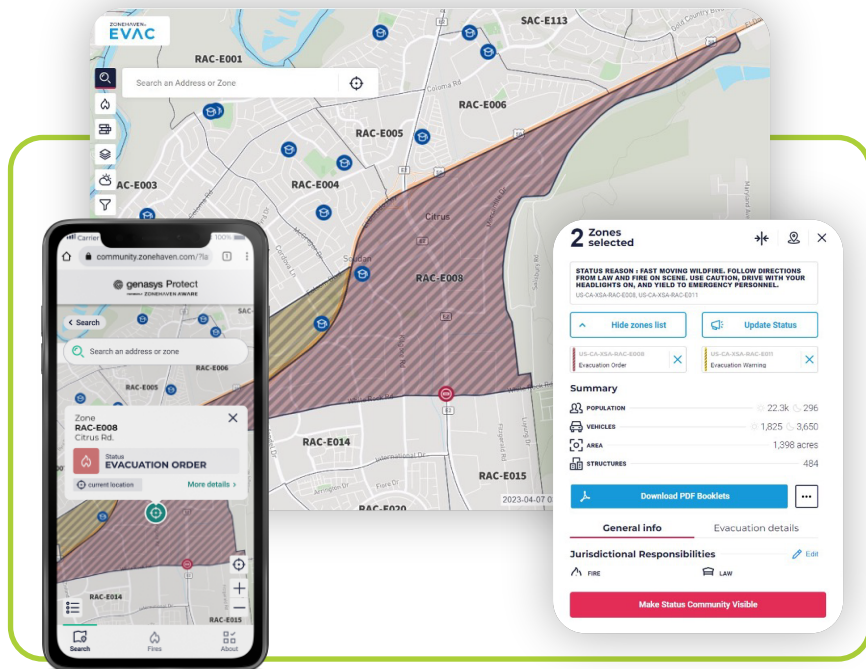


# Keep People Safe from Wildfires with Genasys Protect

*The Proven Technology Toolset Choice for Fire, Emergency, and Law Enforcement Agencies*

More people are moving into the Wildland Urban Interface (WUI), weather conditions are becoming more adverse, and the forest fuels have built up to record levels. This has led to a rapid increase in wildfire frequency and intensity around the world. Now, more than ever, it is critical to be able to make informed decisions and quickly get people out of harm's way. With Genasys Protect, you reduce the time it takes to plan and execute evacuations and provide clear communications to partner agencies, the public, and the media.

This system was successfully deployed to manage evacuation and repopulation on some of the largest, multi-county wildfires in US history. No platform has been battle-tested more.



## Genasys Protect enables you to:

- **Generate** smart evacuation zones for easier communication and management of hyperlocal information
- **Communicate** with unregistered public (“meet them where they are”)
  - Genasys Protect mobile app and website (anonymous)
  - Zone-based mass notification using IPAWS-WEA
  - WAZE integration
  - Esri integration
  - Social media integration
  - Outdoor, always-connected speakers
- **Plan** and model tools to help make more accurate decisions in real time
- **Create** multi-agency, common operating picture and collaboration tools to help make faster decisions with timely incident-specific information
- **Provide** community engagement programs to increase awareness and engagement



# Genasys Protect for Wildfires

**The complete Protective Communications platform.**

Reduce the time from incident recognition to community notification. When your community is threatened by wildfire, use the power of Genasys Protect to make informed decisions fast. Have confidence knowing you'll be ready when it matters.



**Accelerate decision-making** through comprehensive planning, preparation, and evacuation management system.



**Simulate and test evacuation plans** before a wildfire starts to validate evacuation management plans and emergency response plans across agencies.



**Broadcast voice messages through acoustic devices** of specific actionable information even when the power grid and/or network are down.



**Target communications** to specific locations through precise zones and reach the public where they are even if they are not opted-in.



**Provide the public with convenient resources** via a mobile app and website for authoritative and timely information before, during, and after a wildfire.



**Send zone-based alerts** with surgical precision to people in different zones using IPAWS and across the most widely used communication channels like WAZE.



**View a common operating picture** with real-time data and critical information for both evacuation and repopulation for a collaborative response.



**Deliver the latest information** during a wildfire through live data feeds to agency applications like Tablet Command.

**Genasys Protect-EVAC helps you achieve your primary mission:** get people out of harm's way and protect life! Thousands of fire, emergency management, and law enforcement agencies rely on Genasys Protect-EVAC (formerly Zonehaven) ability to enhance preparedness, communication and recovery during wildfires.

*"My junior patrol officer was able to use this system and it took him about two minutes to order an evacuation of an entire neighborhood just simply by identifying the zone that it was and communicating it to the communications warning system, which then broadcast the warning to the neighborhood," -*

**Jon King, Police Chief for the city of Moraga, CA.**



REQUEST A  
**DEMO**



## Genasys: Global Provider of Protective Communications Solutions

Protecting people and property for over 40 years and covering over 70 Million people in more than 100 countries worldwide, including more than 500 cities, counties and states in the U.S., as well as more than half of all California counties.

